

Shaw A



\$531,561.34

Legacy Plan | 5 BR | 3.5 BA | 3254.2 Sq. Feet | 84.00 Depth | 42.00 Width

A CUSTOM DESIGN BY MITCH GINN! The Shaw exudes European elegance with its 4-sided brick facade. Spanning nearly 3,300 square feet, the Shaw offers 5 bedrooms and 3.5 bathrooms. Despite a 42' wide exterior, the interior of the Shaw feels vast, challenging homes twice its size. The kitchen is a highlight, boasting a large sink island, ample storage, and natural light from a triple counter window, all of which seamlessly flows into the breakfast room. The master suite on the main level is a true retreat, featuring a spacious walk-in closet with its own washer and dryer, and a spa-like bath with a standalone tub, walk-in tile shower, and dual split vanities. There are four other spacious bedrooms, with the fifth offering private access with its own staircase — perfect for an in-law suite. The Shaw also offers ample storage and a secondary laundry room upstairs. Outside, a massive covered porch overlooks the front, back, and side, which has a fireplace. Call today for more information!

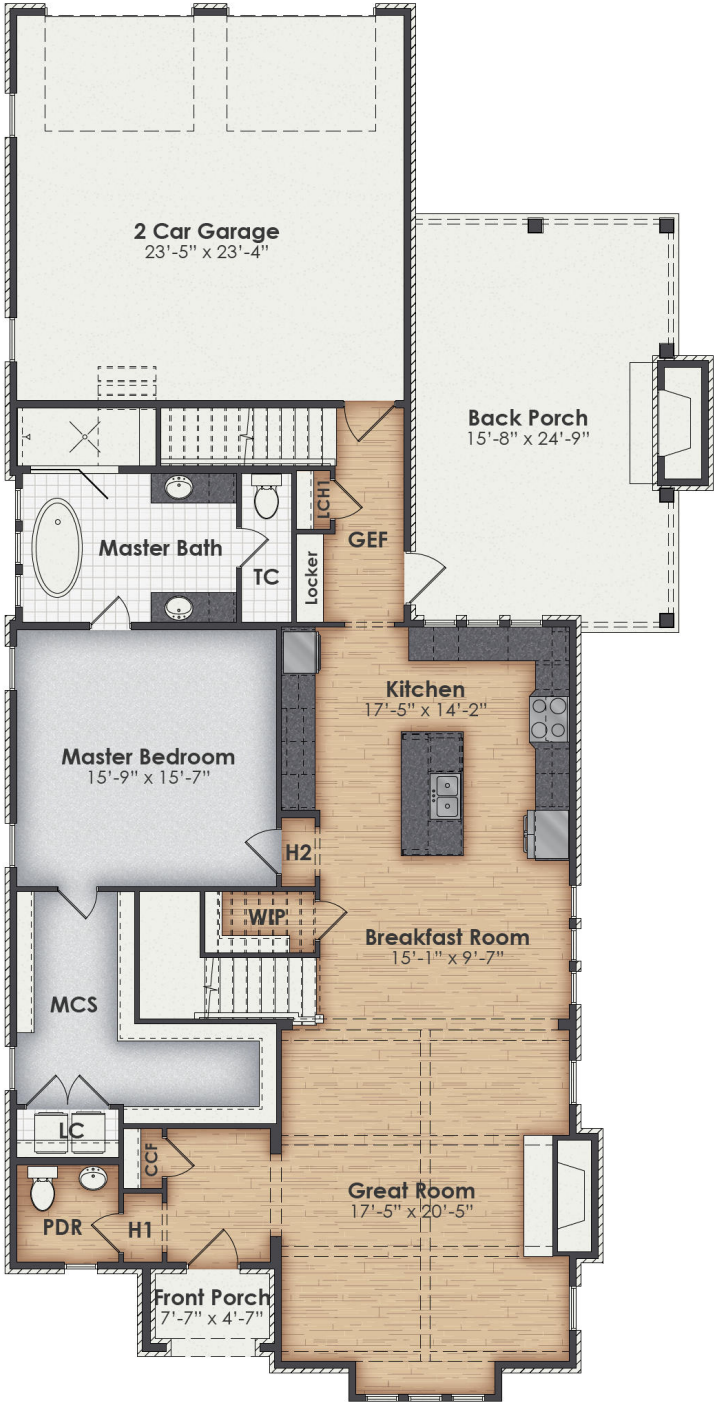
*** Price Disclaimer - Please Note – This price is based on structure only built to our standards assuming a slab on grade foundation. No account is taken into for lot specific items such as grading, driveway, landscape, etc. Renderings often show raised foundations, masonry chimneys and upgraded front doors which are potentially upgrades depending on the plan selected. Renderings often show a different grid pattern or window style than what the Building Plans show. Consult with your local design consultant for further details.**

Plan Attributes

Primary Features
Single Eating Area
2 Story - 2nd Level above Main Level
Master only on Main Level
Master Bath Tub
Secondary Features
Single Wall Oven with Cooktop and Hood
Free Standing Garden Tub

Secondary Features (Cont)
Locker Built In

Shaw A



Shaw A

