

Mayfield A



**\$215,726.38**  
Kraft Plan | 3 BR | 2.5 BA | 1454.0 Sq. Feet | 24.33 Depth | 32.67 Width

CUTE, COMPACT, CRAFTSMAN! The Mayfield features 3 bedrooms, 2.5 bathrooms, and over 1,400 square feet of comfortable living space in a package only 32' wide and 24' deep - making it suitable for both urban and rural settings. The Mayfield is a true entertainer's dream, with the great room, breakfast room, and kitchen essentially combined into one open space, making gatherings a breeze. The kitchen's ample cabinet and counter space is complemented by a seating island and the adjacent laundry room. Owing to traditional two-story design, all bedrooms are located on the second floor. The master suite is truly fit for a king, with luxurious details as would befit royalty such as an abundance of windows providing ample natural light, and a tray ceiling. The master bath has an oversized walk-in shower, and there is a large master walk-in closet as well. The two additional bedrooms are both spacious and have ample closet space, with a shared bath between them. Call today for more information!

**Price Disclaimer - Please Note:**  
*This price is based on structure only, built to our standards assuming a slab-on-grade foundation. It does not include lot-specific items such as grading, driveway, landscaping, etc.*

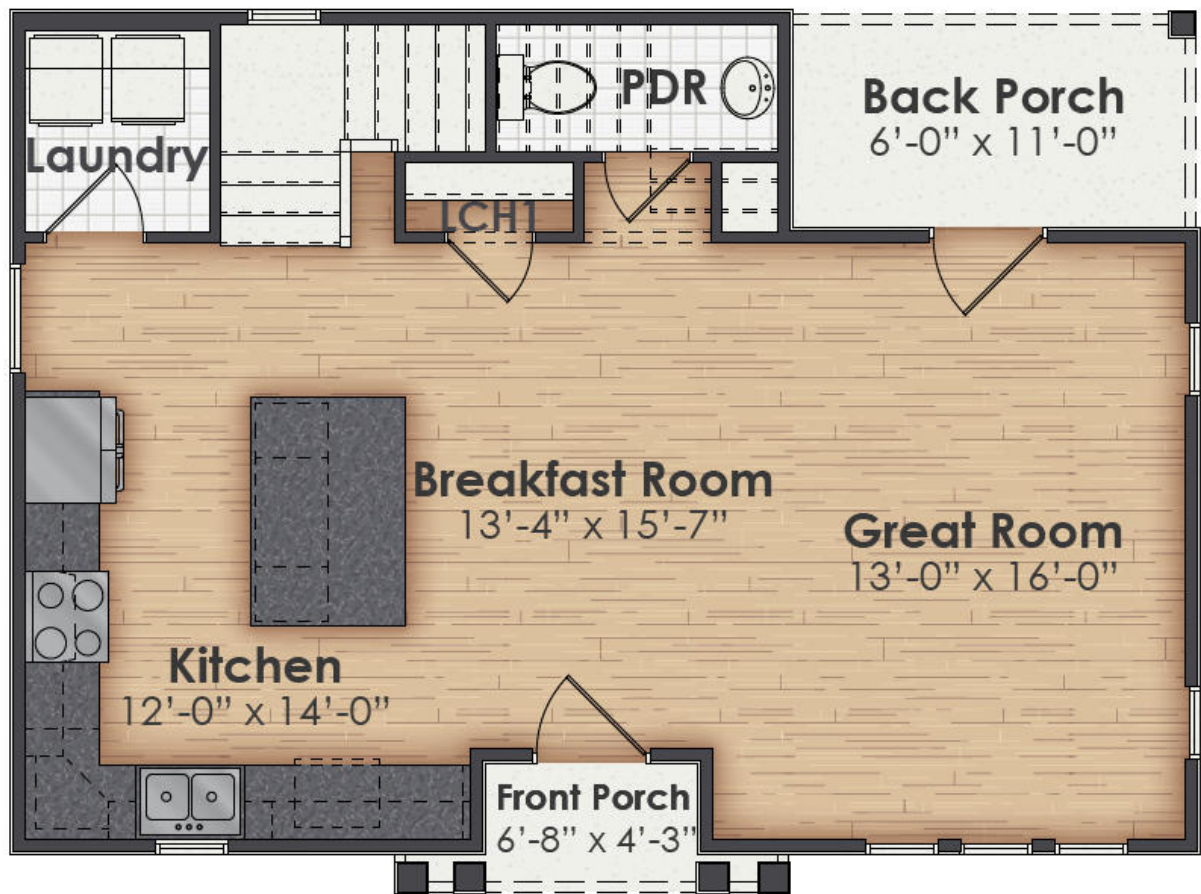
*Renderings often show raised foundations, masonry chimneys, upgraded garage doors, and upgraded front doors, which may be considered upgrades depending on the plan selected. Renderings may also depict a different window grid pattern or style than what is shown in the actual building plans.*

*Please consult your local design consultant for full details and accurate pricing based on your lot and selected finishes.*

**Plan Attributes**

Primary Features
Single Eating Area
2 Story - 2nd Level above Main Level
No Bedrooms on Main
Secondary Features
Microwave above Range

## Mayfield A



## Mayfield A

