

Parker w/ Basement A



\$629,147.89

Legacy Plan | 4 BR | 4.0 BA | 3667.0 Sq. Feet | 76.08 Depth | 72.42 Width

FAMILY-SIZED FARMHOUSE WITH UNFINISHED BASEMENT! With 4 bedrooms, 4 bathrooms, and nearly 3,700 square feet of heated area, not including the unfinished basement, the Parker is sure to check every box on your list with its perfect blend of space and comfort. The Parker greets you with a stunning front foyer and formal dining room, and then an open living area beyond that, with the great room, breakfast room, and kitchen essentially encompassing one space. An oversized seating island, a wall oven and microwave, a separate cooktop, and a huge walk-in pantry complete this chef's dream kitchen. The master suite has a walk-in closet and an oversized master bath with dual split vanities, a freestanding tub, and walk-in tile shower. There is a second bedroom on the main level with a full bath. All upstairs bedrooms have spacious closets. In addition, there is an upstairs office and bonus room, both perfect for studying and hobbies. Please contact us today for more information.

*** Price Disclaimer - Please Note – This price is based on structure only built to our standards assuming a slab on grade foundation. No account is taken into for lot specific items such as grading, driveway, landscape, etc. Renderings often show raised foundations, masonry chimneys and upgraded front doors which are potentially upgrades depending on the plan selected. Renderings often show a different grid pattern or window style than what the Building Plans show. Consult with your local design consultant for further details.**

Plan Attributes

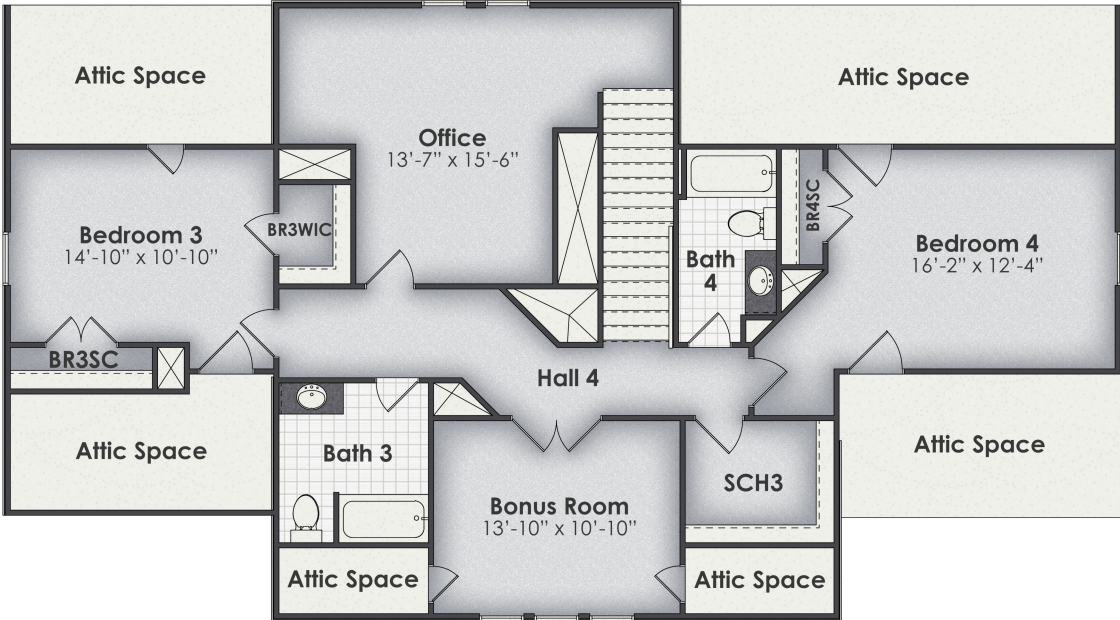
Primary Features
Formal Dining and Breakfast Room
2 Story - 2nd Level above Main Level
2 Story - 2nd Level below Main Level
Bonus Room in Upper Level among Other Space
Office
Master and Another Bedroom on Main
Master Bath Tub

Secondary Features
Single Wall Oven with Cooktop and Hood
Free Standing Garden Tub
Locker Built In
Walk in Pantry

Parker w/ Basement A



Parker w/ Basement A



Parker w/
Basement A

